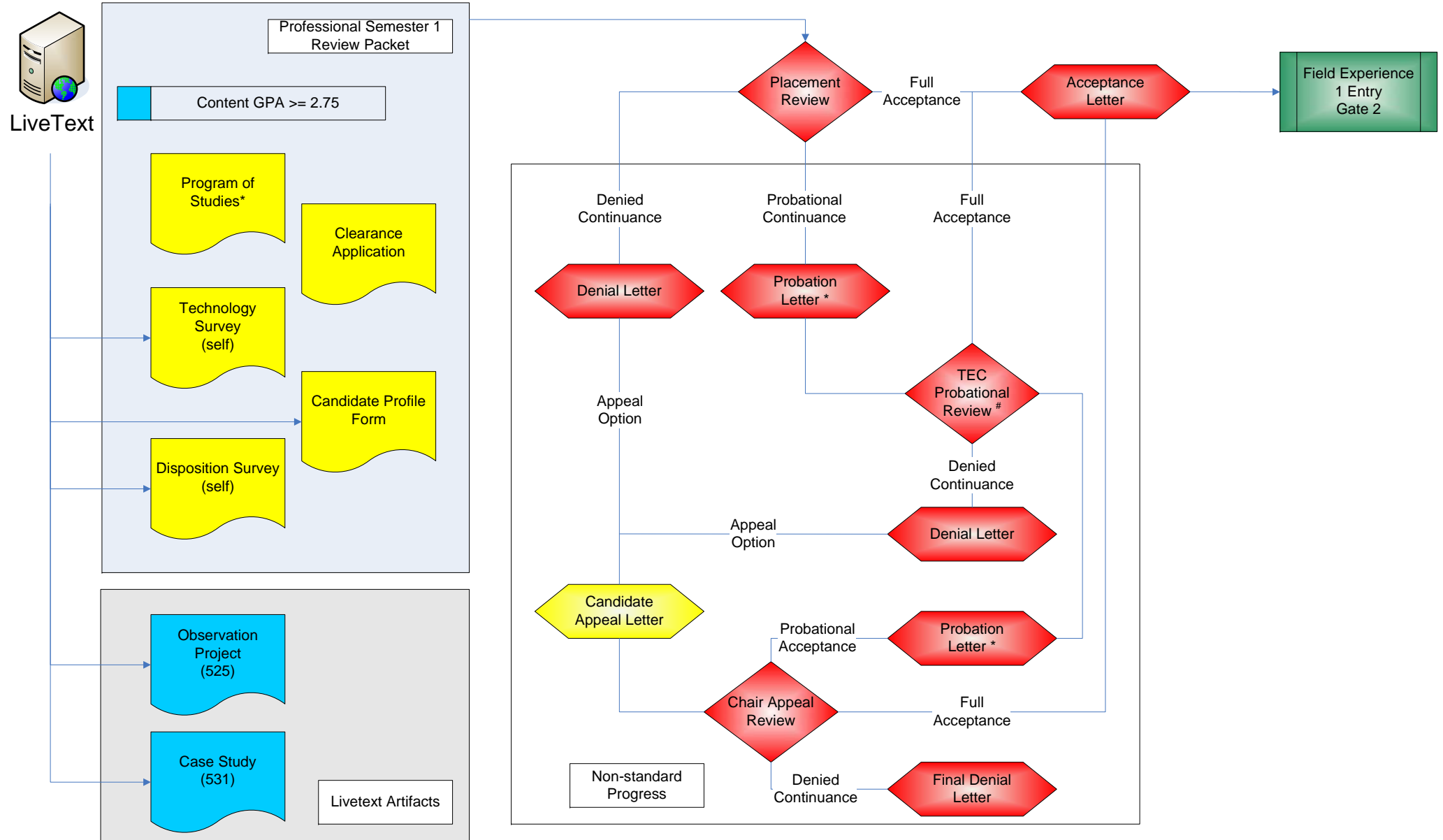
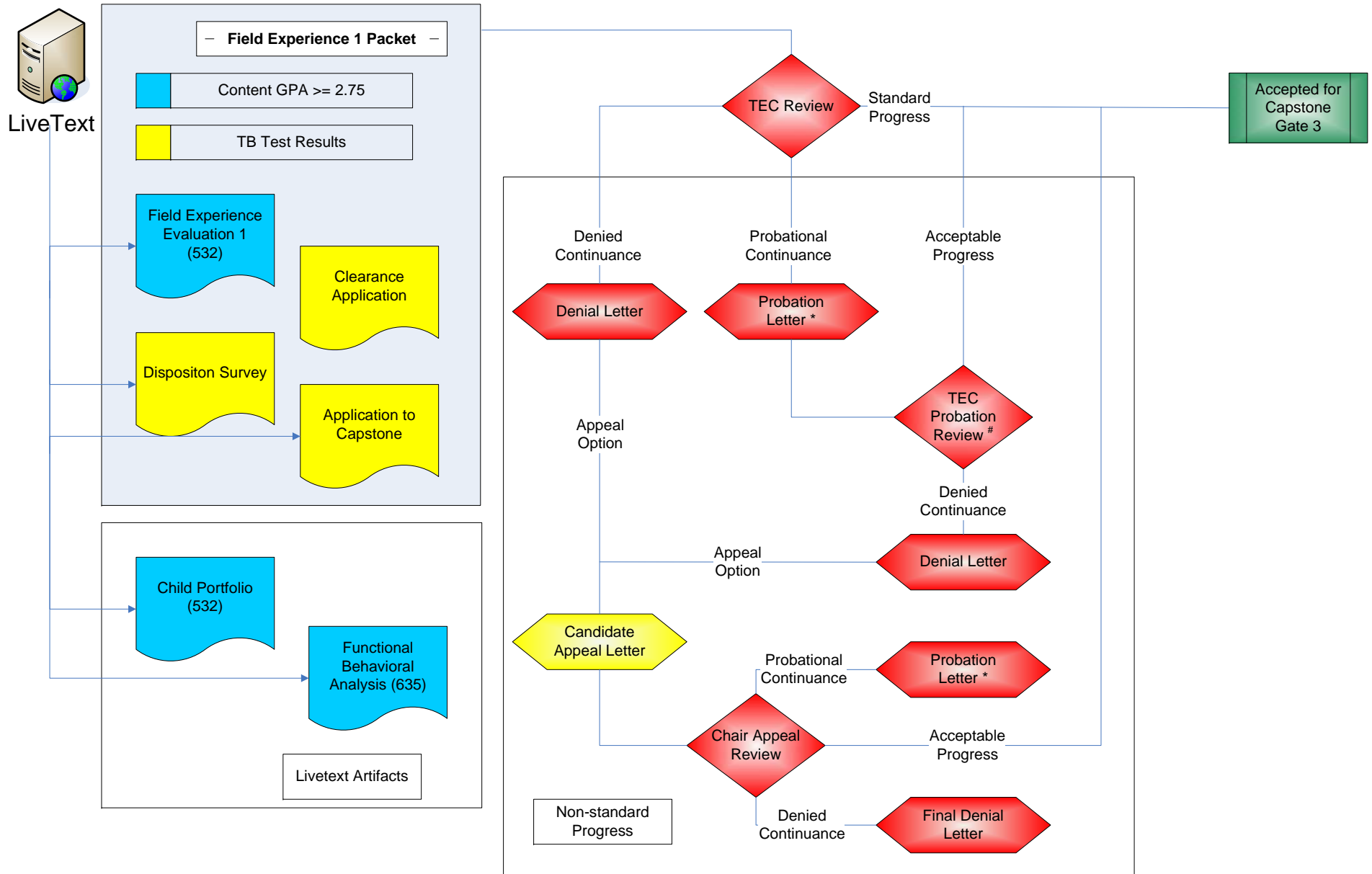


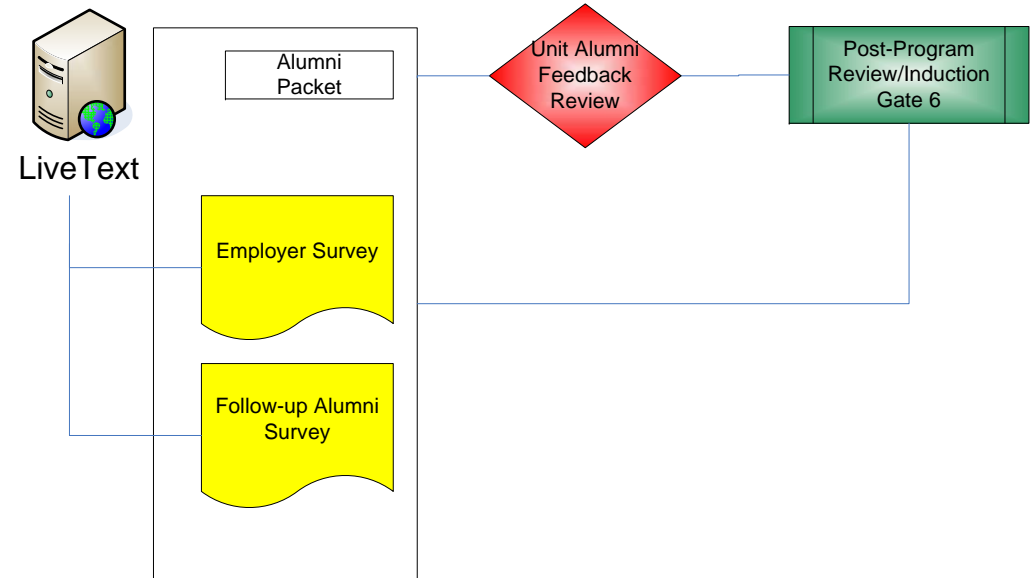
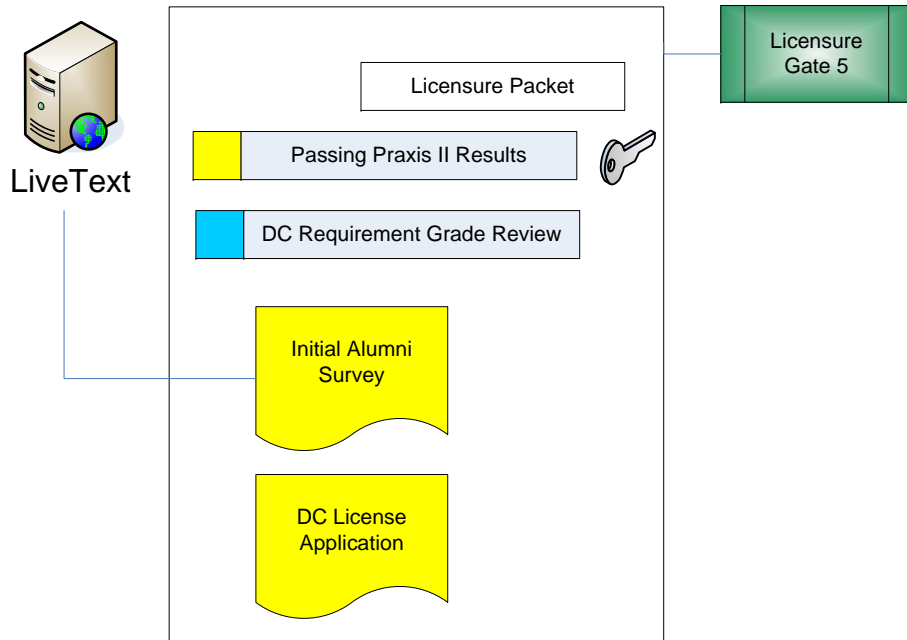
\* Provisional Status is identified as "Accepted with Conditions" by the School of Arts and Sciences



\* Individual Program of Studies will include any required prerequisites based on Transcript analysis by Program Coordinator

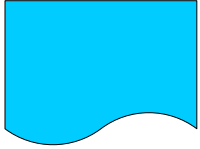




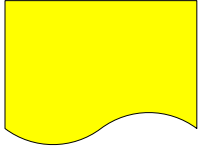


The Catholic University of America  
Washington, D.C.

Early Childhood / Elementary Education  
Flowchart Legend



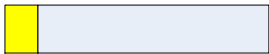
Course generated artifact:  
Candidates create during required courses  
(Example: Action Research Project)



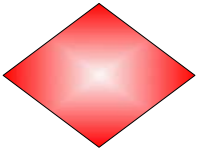
Gateway Artifact:  
Candidates must submit/complete outside of required course  
(Example: Candidate Profile Form)



Data Artifact: Created/Calculated by TE Program  
(Example: Content GPA)



Data Artifact: Generated outside TE Program, candidate must submit  
(Example: Praxis Scores)



Administrative Decision/Review Point  
(Example: TEC Review)



Department Generated Documentation  
(Example: Provisional Letter)



Candidate Generated Documentation  
(Example: Appeal Letter)

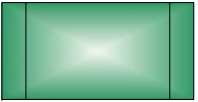


Key Artifact: Used by Department for program analysis

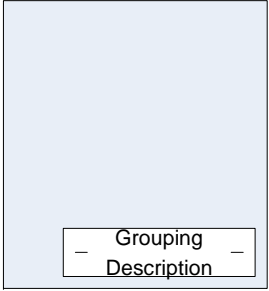


LiveText

LiveText storage of data and artifacts



Successful Completion of Gate Requirements



Grouping / Collection / Virtual Packet  
(Ex. Admissions Packet)

